

# A1 INSTALLATION DRAWING

IF THIS DOCUMENT IS PRINTED IN HARDCOPY, IT IS FOR INFORMATION USE ONLY AND THEREFORE IS NOT SUBJECT TO UPDATING CONTROLS. ALWAYS REFER TO SOLIDWORKS VIEWER FOR LATEST ISSUE



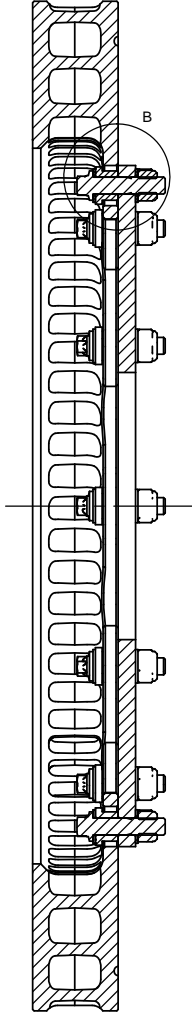
THIS DRAWING IS CONFIDENTIAL AND IS SUPPLIED ON THE EXPRESS CONDITION THAT IT SHALL NOT BE LOANED OR COPIED OR DISCLOSED TO ANY OTHER PERSON OR USED FOR ANY OTHER PURPOSE WITHOUT THE WRITTEN CONSENT OF AP RACING LTD.



**AP Racing**  
Wheler Road  
Coventry  
CV3 4LB  
Tel: +44 (0) 24 7663 9595  
Fax: +44 (0) 24 7663 9559  
e-mail: [engineering@apracings.com](mailto:engineering@apracings.com)  
Web site: <http://www.apracings.com>

© AP Racing Ltd. 2005

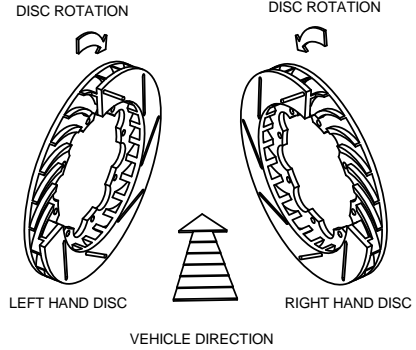
Issue No.	Alterations		Zone	Initials
	Date & No.	Particulars		
1	08/02/06 B4477	FIRST ISSUE	#	DRA
2	27/10/08 B5314	SHEET 2 ADDED	#	DRA
3	14/02/19 B8018	REPLACE CAP HEAD BOLT WITH 6 LOBE 0.25 UNF BOLT. BOLT KIT TABLE ADDED AND RELEVANT VIEWS UPDATED.	E13	AM



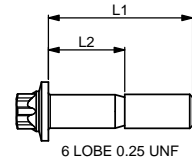
DISC MOUNTING PCØ. (VARIOUS)  
SEE INDIVIDUAL DISC CUSTOMER DRAWING FOR RECOMMENDED MOUNTING PCØ

'X' - HOLES  $\phi$ 6.450 THRU EQUI-SPACED  
 $\phi$ 6.400  
(FINAL SIZE, AFTER ANY TREATMENT).  
CHF. 0.5 x 45° EACH SIDE  
FOR QUANTITY 'X' SEE INDIVIDUAL DISC CUSTOMER DRAWING.  
 $\phi$  0.05 Z

### DISC INSTALLATION



IT MAY BE NECESSARY TO ARRANGE CUT-OUTS AS ILLUSTRATED TO ENCOURAGE DISC COOLING ON THE BELL SIDE OF THE DISC. SEE AP RACING CATALOGUE FOR GUIDANCE ON DISC COOLING AND OTHER ADVICE ON DISCS.



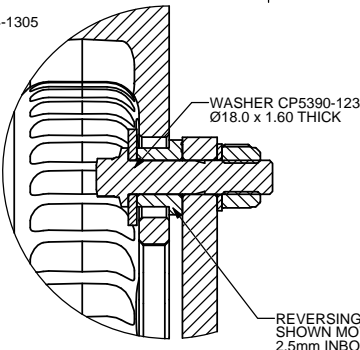
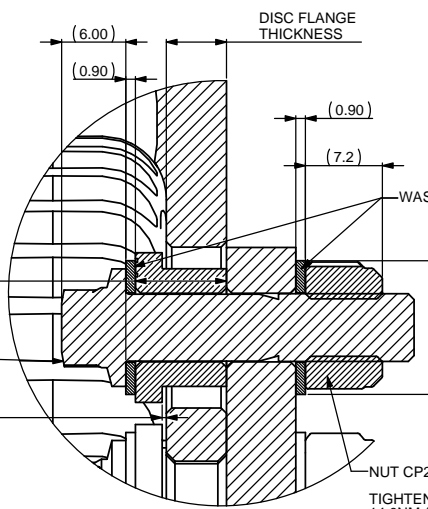
BOLT DIMENSIONS AND PART NUMBERS		
BOLT PART NO.	DIM 'L1'	DIM 'L2'
CP3845-100	22.2	9.5
CP3845-101	25.4	12.7
CP3845-102	27	14.3
CP3845-107	30.2	17.5

E8, 6-LOBE HEAD BOLT KITS (ALL Bolts 1/4" UNF)		
KIT PART NO.	NO. BOLTS IN KIT	BOLT PART NO.
CP3845-100K08	8	CP3845-100 - .875" LONG.
CP3845-102K10	10	CP3845-102 - 1.062" LONG.
CP3845-100K12	12	CP3845-100 - .875" LONG.
CP3845-101K12	12	CP3845-101 - 1.0" LONG.
CP3845-102K12	12	CP3845-102 - 1.062" LONG.

8.0 MAX  
6.50 TYP

O/DIA APPROX PCØ +15  
ENSURE IT CLEARS THE BRAKE PADS

MOUNTING BELL DIMENSIONS TO SUIT AP RACING DISCS AND MOUNTING BOLTS.  
ALL OTHER DIMENSIONS ARE AT THE DISCRETION OF THE CUSTOMER.



NOTE:-  
BOBBINS HAVE A LETTER STAMPED ON THEM THAT CORRESPONDS TO THE LAST LETTER IN THE PART No.

BOBBIN / FLOAT CHART			
STANDARD AP RACING DISC FLANGE THICKNESSES mm	BOBBIN PART No.	BOBBIN LENGTH L3 mm	NOMINAL DISC FLOAT mm
4.35 / 4.30	CP2494-595MA	7.22	0.4
4.85 / 4.80	CP2494-593MB	7.72	0.4
5.05 / 5.00	CP2494-592MC	7.92	0.4
5.55 / 5.50	CP2494-591MH	8.42	0.4
5.65 / 5.60	CP2494-1341MD	8.32	0.2
	CP2494-589MJ	8.52	0.4
	CP2494-626ML	8.82	0.7
6.35 / 6.30	CP2494-1342MM	9.02	0.2
	CP2494-504MP	9.22	0.4

TIGHTENING TORQUE  
14.0NM (10.5 LbfFt)

REVERSING THE BOBBIN AS SHOWN MOVES THE DISC  $\phi$  2.5mm INBOARD RELATIVE TO THE BELL.

UNLESS OTHERWISE STATED ALL DIMENSIONS ARE IN mm

SCALE 2:1	SHEET 1 OF 2
DRAWN	ANDREW MURRAY
APPROVED	
DERIVED FROM	
TITLE	GENERIC INSTALLATION DRG (FLOAT IN DISC TYPE)
DRG NO.	CP2494-2000CD

